

TECHNICAL DATA SHEET

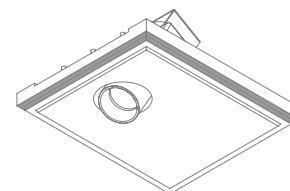
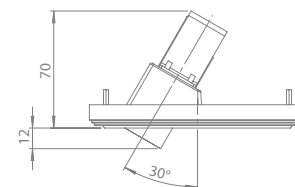
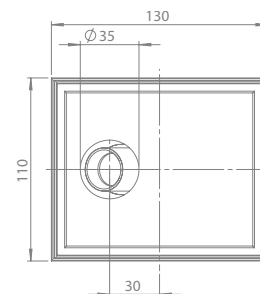
200CENT ROUND 250LM W30 SEMI TRIMLESS IP20

INDOOR - INTERNO - INNENBEREICH - INTERIEUR - INTÉRIEUR - INTERIOR

Fix (not adjustable) Asymmetric 30°

114x134 mm - h = 85 mm

Material : CALCYT® plaster



REF N° 200 BL CR



Black - Chrome

200CENT ROUND W30 IP20 250LM CRI 92

2200°K	2700°K	3000°K	4000°K
REF N° 511 17 520	REF N° 511 17 920	REF N° 511 17 820	REF N° 511 17 720

3W - 250lm - 2 Step MacAdam - **A+**
Serial wiring - - - -
Requires remote LED driver - 1050mA
Narrow beam 12° - Ultra low glare (UGR < 13)

REF N° 200 BL BL



Black - Black

REF N° 200 WH BL



White - Black

REF N° 200 BL WH



Black - White

REF N° 200 WH WH



White - White

REMOTE LED DRIVER ON/OFF

REF N° 697 00 015 min.2W max. 39W

REF N° 697 00 025 min.2W max. 50W

230V/50Hz - - current controlled
 - - IP20 - 1050mA - not dimmable

INSTALLATION KIT

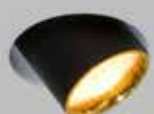
STANDARD (included) installation system for ceiling 9 - 12 - 15 mm

REF N° 200 99 025 installation system for gypsum ceiling 25 mm

REF N° 200 99 030 installation system for gypsum ceiling 30 mm

REF N° 827 00 000 Concrete box 200CENT - Galvanized steel

REF N° 200 BL GO



Black - Gold

REF N° 200 WH GO



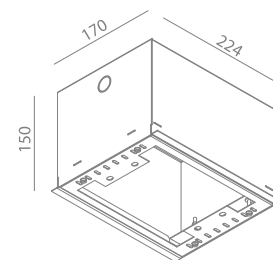
White - Gold

REMOTE LED DRIVER DIM

REF N° 697 60 025 min. 2W max. 60W

1-10V DALI PUSH

230V/50Hz - - current controlled
 - - IP20 - 1050mA - dimmable



BEAM ANGLES

STANDARD (included) beam angle 12°

REF N° 200 BL CO



Black - Copper

REF N° 200 WH CO



White - Copper



TECHNICAL DATA SHEET

200CENT ROUND 500LM W30 SEMI TRIMLESS IP20

INDOOR - INTERNO - INNENBEREICH - INTERIEUR - INTÉRIEUR - INTERIOR

Fix (not adjustable) Asymmetric 30°

114x134 mm - h = 85 mm

Material : CALCYT® plaster



REF N° 200 BL CR

Black - Chrome



REF N° 200 BL BL

Black - Black



REF N° 200 WH BL

White - Black



REF N° 200 BL WH

Black - White



REF N° 200 WH WH

White - White



REF N° 200 BL GO

Black - Gold



REF N° 200 WH GO

White - Gold



REF N° 200 BL CO

Black - Copper



REF N° 200 WH CO

White - Copper

200CENT ROUND W30 IP20 500LM CRI 92

2200°K	2700°K	3000°K	4000°K
REF N° 511 18 520	REF N° 511 18 920	REF N° 511 18 820	REF N° 511 18 720

5,9 W - 500lm - 2 Step MacAdam - **A+**
Serial wiring - - - -
Requires remote LED driver - 700mA
Perfect beam 24° - Ultra low glare (UGR < 13)

REMOTE LED DRIVER ON/OFF

REF N° 697 00 015 min.2W max. 32W

REF N° 697 00 025 min.2W max. 50W

230V/50Hz - - current controlled
 - - IP20 - 700mA - not dimmable

REMOTE LED DRIVER DIM

REF N° 697 60 040 min. 3W max. 60W
1-10V DALI PUSH

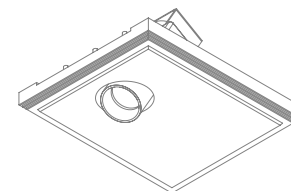
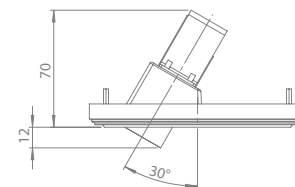
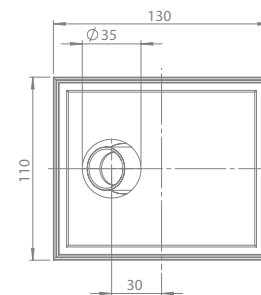
REF N° 697 77 010 min. 2W max. 10W PHASE DIM

REF N° 697 77 020 min. 11W max. 20W PHASE DIM

REF N° 697 30 015 min. 2W max. 20W DALI

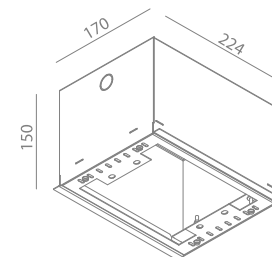
REF N° 697 60 015 min. 2W max. 20W 1-10V PUSH

230V/50Hz - - current controlled
 - - IP20 - 700mA - dimmable



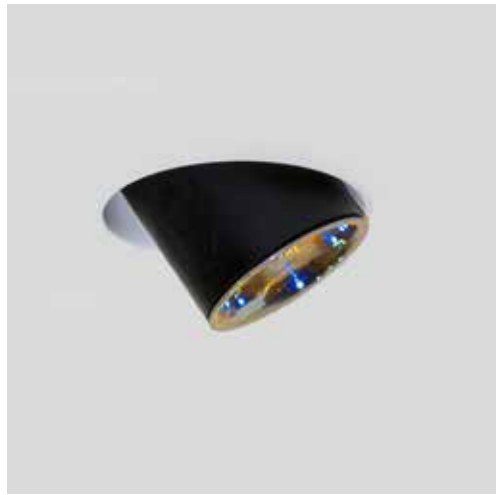
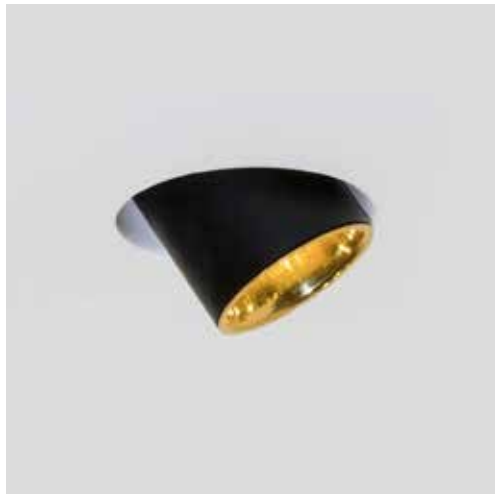
INSTALLATION KIT

- STANDARD** (included) installation system for ceiling 9 - 12 - 15 mm
- REF N° 200 99 025 installation system for gypsum ceiling 25 mm
- REF N° 200 99 030 installation system for gypsum ceiling 30 mm
- REF N° 827 00 000 Concrete box 200CENT - Galvanized steel



BEAM ANGLES

STANDARD (included) beam angle 24°



TECHNICAL DATA SHEET

200CENT ROUND 750LM W30 SEMI TRIMLESS IP20

INDOOR - INTERNO - INNENBEREICH - INTERIEUR - INTÉRIEUR - INTERIOR

Fix (not adjustable) Asymmetric 30°

114x134 mm - h = 85 mm

Material : CALCYT® plaster



REF N° 200 BL CR

Black - Chrome



REF N° 200 BL BL

Black - Black



REF N° 200 WH BL

White - Black



REF N° 200 BL WH

Black - White



REF N° 200 WH WH

White - White



REF N° 200 BL GO

Black - Gold



REF N° 200 WH GO

White - Gold



REF N° 200 BL CO

Black - Copper



REF N° 200 WH CO

White - Copper

200CENT ROUND W30 IP20 750LM CRI 92

2400°K	2700°K	3000°K	4000°K
REF N° 511 19 520	REF N° 511 19 920	REF N° 511 19 820	REF N° 511 19 720

6,2 W - 750lm - 2 Step MacAdam - **A+**
Serial wiring - - - -
Requires remote LED driver - 250 mA
Standard beam angle 36°

REMOTE LED DRIVER ON/OFF

REF N° 697 00 040 min.1W max.30W

REF N° 697 00 080 min.27W max.67W

230V/50Hz - - current controlled
 - - IP20 - 250mA - not dimmable

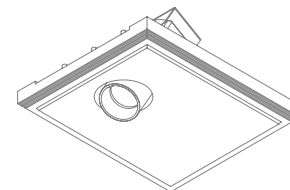
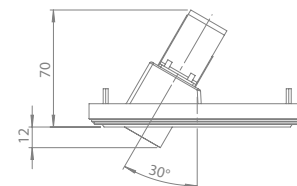
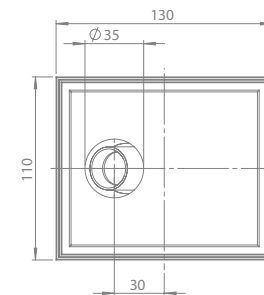
REMOTE LED DRIVER DIM

REF N° 697 60 040 min.3W max.30W
1-10V DALI PUSH

REF N° 697 60 150 min.20W max.100W 1-10V

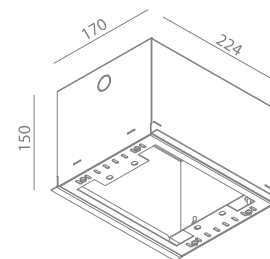
REF N° 697 30 150 min.20W max.100W DALI

230V/50Hz - - current controlled
 - - IP20 - 250mA - dimmable



INSTALLATION KIT

- STANDARD** (included) installation system for ceiling 9 - 12 - 15 mm
- REF N° 200 99 025 installation system for gypsum ceiling 25 mm
- REF N° 200 99 030 installation system for gypsum ceiling 30 mm
- REF N° 827 00 000 Concrete box 200CENT - Galvanized steel



BEAM ANGLES

STANDARD (included) beam angle 36°

